

USE ONLY LOCAL FIREWOOD TO PREVENT SPREAD OF INVASIVE SPECIES

The transport of firewood spreads invasive insects and diseases that are detrimental to large numbers of tree species. The trees in New York are at risk of drastic depletion due to numerous invasive exotic insects, such as the Asian long-horned beetle (ALB) and the Emerald ash borer (ELB). For more information on these invasive beetles, see Lake George Fact Sheets 54 and 55. These beetles have the potential to kill tens of thousands of trees should they become established. In some parts of the U.S., especially the upper Midwest, forest systems have been decimated as large numbers of trees have been killed by these infestations.

These destructive invasives are spread beyond their natural rate by the transport of firewood. Trees killed by pests are generally cut down. This wood may contain larvae or eggs of these insects hidden on or under the bark or deep within the wood. The contaminated wood quickly spreads infestation to new areas, hindering the ability to control the invasive species or eradicate it. Campers, boaters and hunters often transport large loads of potentially contaminated firewood

WOOD HARBORS INVASIVES NEVER MOVE FIREWOOD



**Use only local firewood to prevent the spread of invasive species:** New York State regulates the transport of firewood. Do not move firewood more than 50 miles from its source. Do not import untreated firewood or remove wood from quarantine areas.

hundreds of miles, which helps to spread the infestation to other areas.

For this reason, New York State has a regulation in effect that limits the transport of untreated firewood to less than 50 miles from its source. Only specially treated firewood can be imported to New York and transported beyond 50 miles. These regulations are important to protect our forests:

- Do not bring firewood from home to campgrounds or parks.
- Purchase firewood locally from the site you are visiting. Ask for a

THE FUND *for* LAKE GEORGE



po box 352, lake george, ny 12845 · (518) 668-9700  
 info@fundforlakegeorge.org  
 fundforlakegeorge.org



LAKE · GEORGE  
**WATERKEEPER®**

po box 591, lake george, ny 12845 · (518) 668-5913  
 info@lakegeorgewaterkeeper.org  
 lakegeorgewaterkeeper.org

# Never Move Firewood

## LAKE GEORGE FACT SHEET

label that the firewood is from a local source.

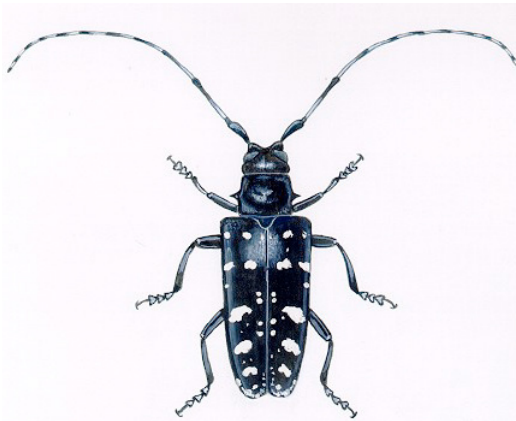
If you choose to transport firewood within New York, please do your part to take all precautions:

- Firewood must remain within 50 miles of its source and have a receipt or label documenting its source.
- Self produced (non-purchased) firewood must have a Self-Issued Certificate of Source and be within 50 miles of destination.
- Firewood transported into the state or more than 50 miles must be heat treated to New York's standard to kill pests. Kiln dried firewood must be raised to a core temperature of 160° F and hold that core temperature for at least 75 minutes.

**Respect quarantine areas.** New York State has expanded quarantine areas and regulates the movement of ash wood products in those areas. ALL species of firewood, wood chips and bark mulch are restricted by the quarantine.

For more information on New York's Firewood Regulation visit [www.dec.ny.gov](http://www.dec.ny.gov) or email [firewood@gw.dec.state.ny.us](mailto:firewood@gw.dec.state.ny.us).

The FUND for Lake George and Lake George Waterkeeper recommend that you do not import any firewood into the Lake George area and buy only locally produced firewood. This is important to protect local forests and property.



Invasive beetles, such as the Asian long-horned beetle (above left) and the Emerald ash borer (above right) spread through the transport of firewood and devastate forests.

Other states and the province of Ontario have enacted bans or regulations on the movement of firewood in an attempt to limit the spread or prevent the introduction of invasive pests and protect forests. Taking measures to ensure the protection of forest resources, the United States Department of Agriculture Animal Plant Health Inspection Service (USDA APHIS) and USDA Forest Service have begun public education campaigns and outreach educating would be firewood movers to "not move firewood."

**Do your part to protect our forests and trees. Never move firewood!**

September 2010

THE FUND *for* LAKE GEORGE



LAKE · GEORGE  
WATERKEEPER®

